



Fig. 1

## To create a new spot channel in Photoshop:

Choose Window > Channels to display the Channels palette.

Choose New Spot Channel from the Channels palette menu (Fig. 1) – If you made a selection, that area will be filled with the currently specified spot color.

Please name the new spot channel "Silver Foil". Click the color box, and choose a color. We use the build displayed in Fig. 2 (35 Cyan 100 Yellow), just to see where the Foil is being used. If your project has a color similar to our build, that would make it difficult to distinguish between said color and the foil, you can change the value of the build.

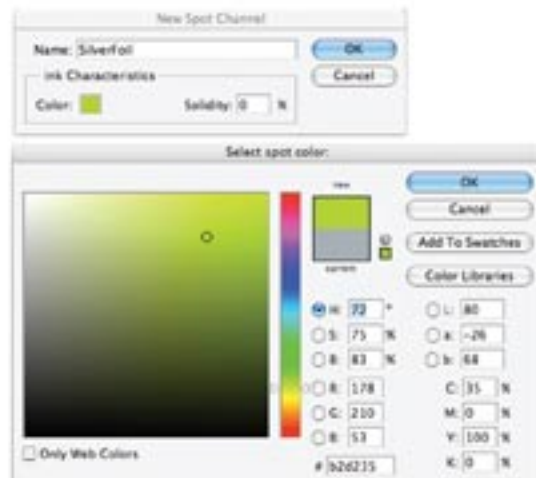


Fig. 2

If you already have an alpha channel and need to convert it to a spot channel, select the alpha channel in the Channels palette and choose Channel Options from the palette menu. Select Spot Color. If needed, rename the channel to "Silver Foil". Click the color box, choose the right build color in the Color Picker dialog box, and click OK.

NOTE: You may need to invert the image (Choose Image > Adjustments > Invert).

## Save as DCS2:

Save the file as a DCS2 eps – stands for Desktop Color Separations (Fig. 3). This is a special kind of EPS file that can contain spot color channels.

Please make sure that only the option "Spot Colors" is checked in the dialog box (Fig. 3) - NOTE: If the "Spot Color" option is not available, then a spot channel was not created. Please check, and verify the steps.

And that the next window matches all the options on Fig. 4.

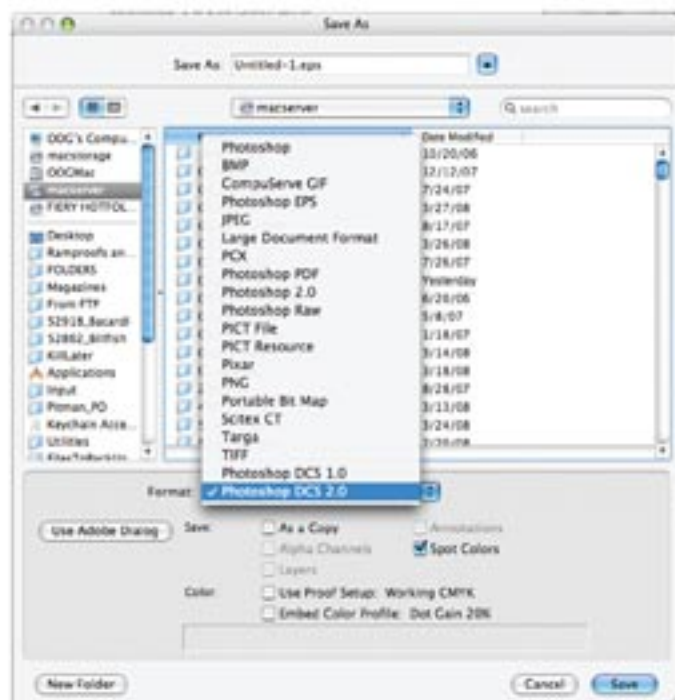


Fig. 3

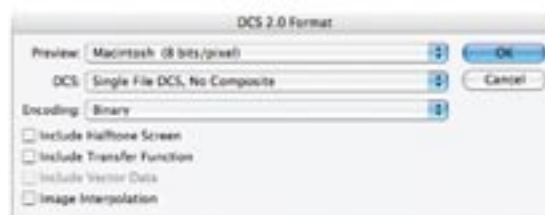


Fig. 4